

# ChemBrief



**Southern Clay Products, Inc.** • 1212 Church Street • Gonzales, Texas 78629  
Tel: (830) 672-2891 • Fax: (830) 672-1903

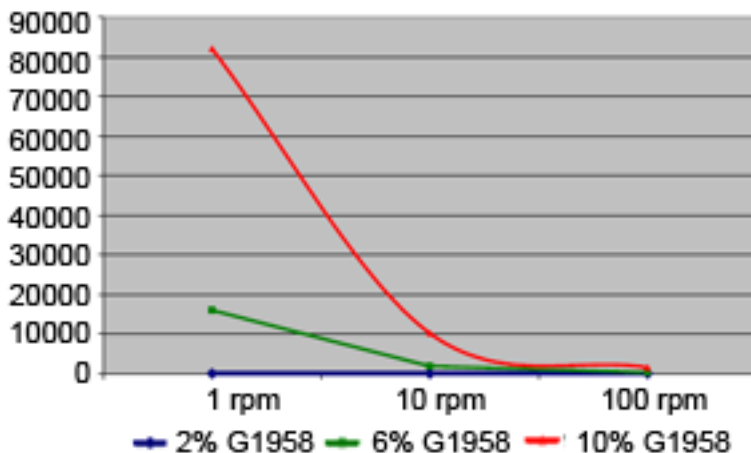
## Garamite® 1958 Mixed Mineral Thixotrope in n-methyl pyrrolidone and d-limonene

Garamite® 1958 MMT acts as an efficient thickener of systems containing n-methyl pyrrolidone and/or dlimonene, including paint strippers, anti-graffiti products, cleaning products and coatings. Garamite® 1958 offers the following advantages over conventional thixotropes:

- High efficiency
- Incorporates with low shear
- Low dust
- High bulk density; requires less space for inventory
- No heat or chemical activation

The following graph and pictures demonstrate the efficiency of Garamite® 1958 in thickening NMP:

**Viscosity of Garamite® 1958 in NMP**



**Southern Clay Products, Inc.**  
Gonzales, TX USA  
830-672-2891  
www.scprod.com

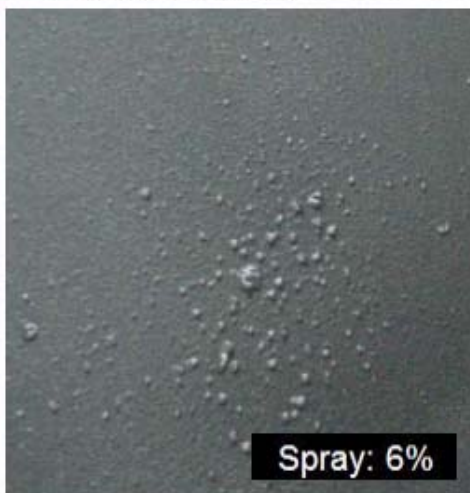
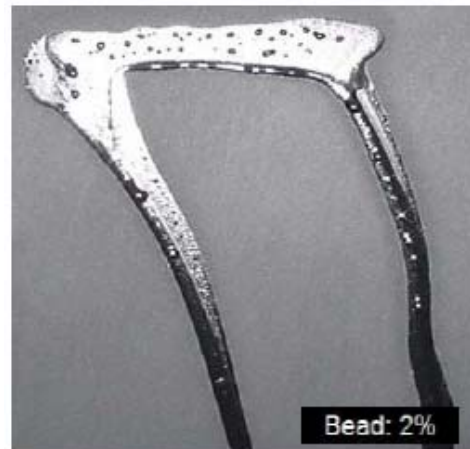
**Rockwood Clay Additives**  
Widnes, UK  
44-151-495-2222

**Rockwood Clay Additives**  
(Singapore)  
65-6532-0676

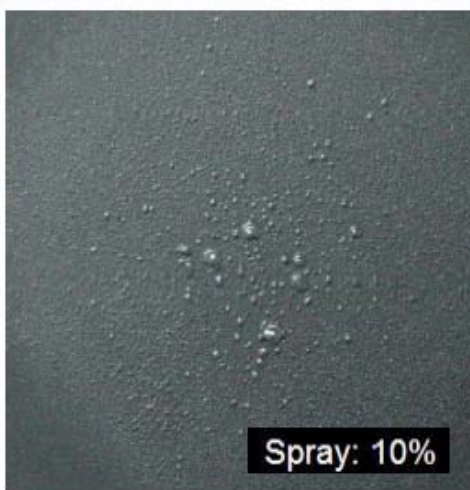
Disclaimer of Warranty: The information presented herein is believed to be accurate but is not to be taken as a warranty, guarantee or representation for which we assume legal responsibility. This information does not grant permission, license, or any rights or recommendations to practice any form of proprietary intellectual property without obtaining the appropriate license or grant from the property owner. The information is offered solely for your consideration, investigation and verification, but you must determine the suitability of the product for your specific application. The purchaser assumes all risk of use of handling the material, including but not limited to transferring the material within purchaser's facilities, using the material in applications specified by the purchaser and handling any product which includes the material, whether or not in accordance with any statements made herein.



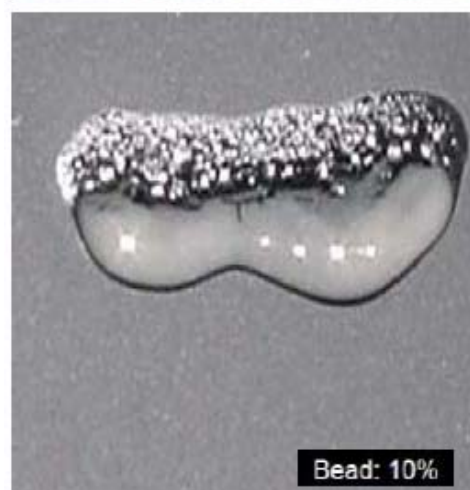
*2% Garamite®  
1958 in NMP  
after 15 minutes  
shows slight runs  
in spray, but runs  
off the test panel  
when applied in a  
bead.*



*6% Garamite®  
1958 in NMP  
after 15 minutes  
shows no runs in  
spray, and slight  
runs on the test  
panel when  
applied in a bead.*



*10% Garamite®  
1958 in NMP  
after 15 minutes  
shows no runs in  
spray, and very  
slight running on  
the test panel  
when applied in a  
bead.*



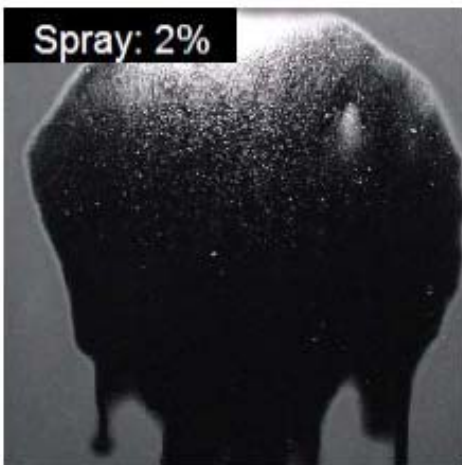
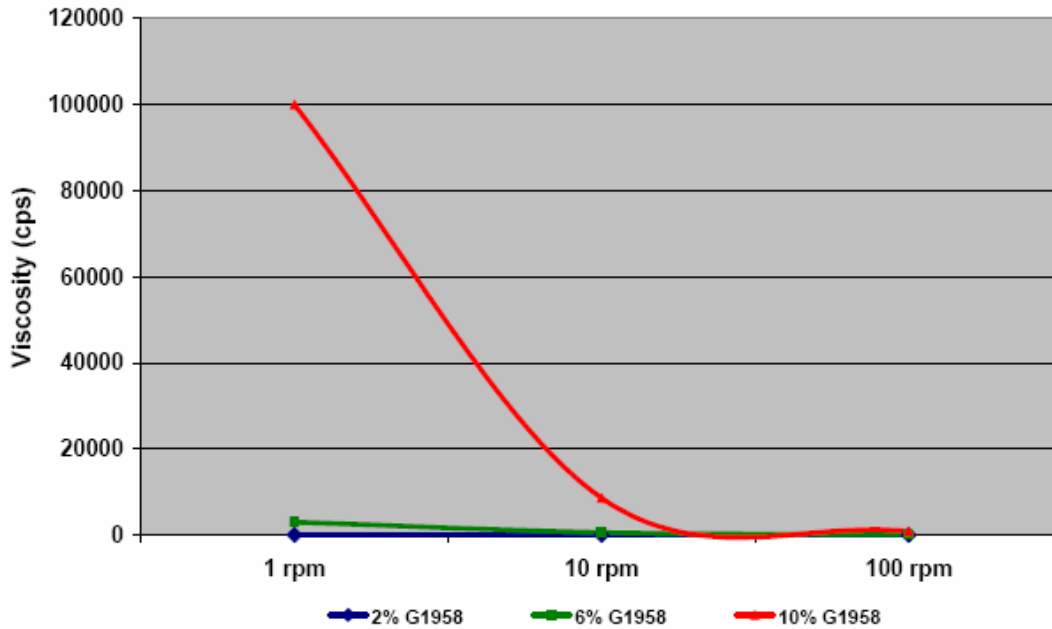
Southern Clay Products, Inc. • 1212 Church Street • Gonzales, Texas 78629  
Tel: (830) 672-2891 • Fax: (830) 672-1903

**ROCKWOOD**  
ADDITIVES

**ChemBrief**

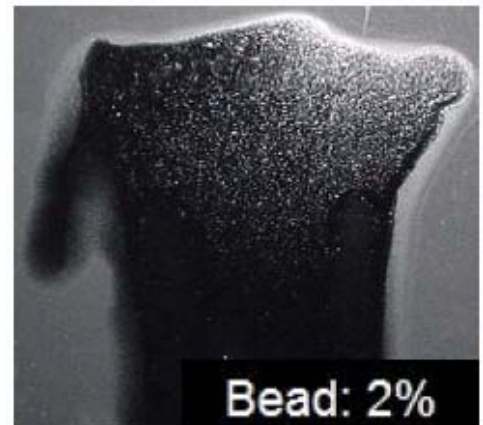
The following graph and pictures demonstrate the efficiency of Garamite® 1958 in thickening d-limonene:

Viscosity of Garamite® 1958 in d-limonene



Spray: 2%

*2% Garamite® 1958 in dlimonene after 15 minutes shows slight runs in spray and test panel when applied in a bead..*



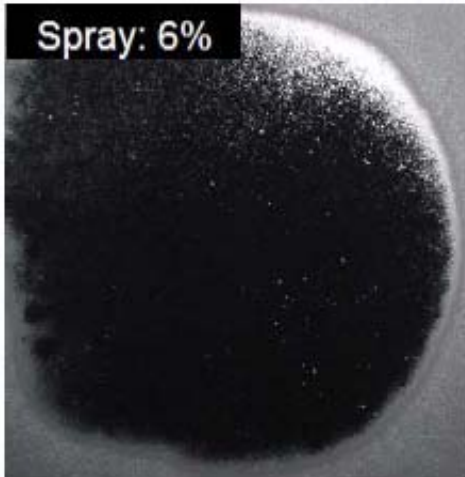
Bead: 2%



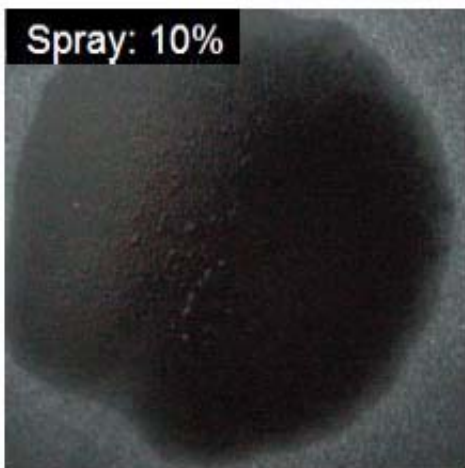
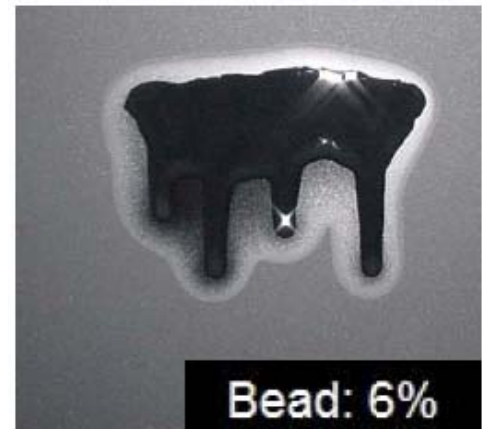
Southern Clay Products, Inc. • 1212 Church Street • Gonzales, Texas 78629  
Tel: (830) 672-2891 • Fax: (830) 672-1903

ROCKWOOD  
ADDITIVES

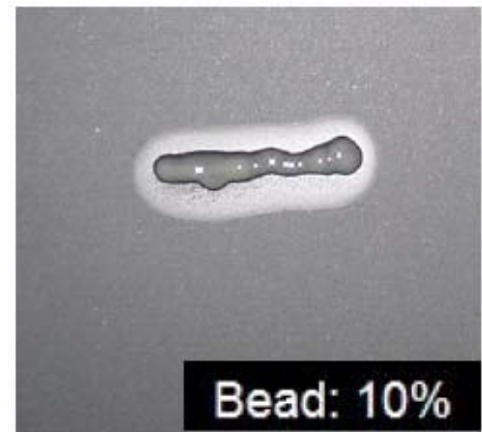
ChemBrief



*6% Garamite®  
1958 in dlimonene  
after 15  
minutes shows no  
runs in spray, and  
slight runs on the  
test panel when  
applied in a bead.*



*10% Garamite®  
1958 in dlimonene  
after 15  
minutes shows no  
runs in spray or  
test panel when  
applied in a bead.*



Garamite® 1958 develops cling or anti-sag properties in both n-methyl pyrrolidone and d-limonene at about 6% solids. Samples prepared at higher solids tended to be very thick and showed little flow, which may not be desirable for certain applications.

*For more information on how Southern Clay Products can assist you,  
please contact us at (800) 324-2891 or visit us on the internet at [www.scprod.com](http://www.scprod.com).*



Southern Clay Products, Inc. • 1212 Church Street • Gonzales, Texas 78629  
Tel: (830) 672-2891 • Fax: (830) 672-1903

**ROCKWOOD**  
ADDITIVES

**ChemBrief**